

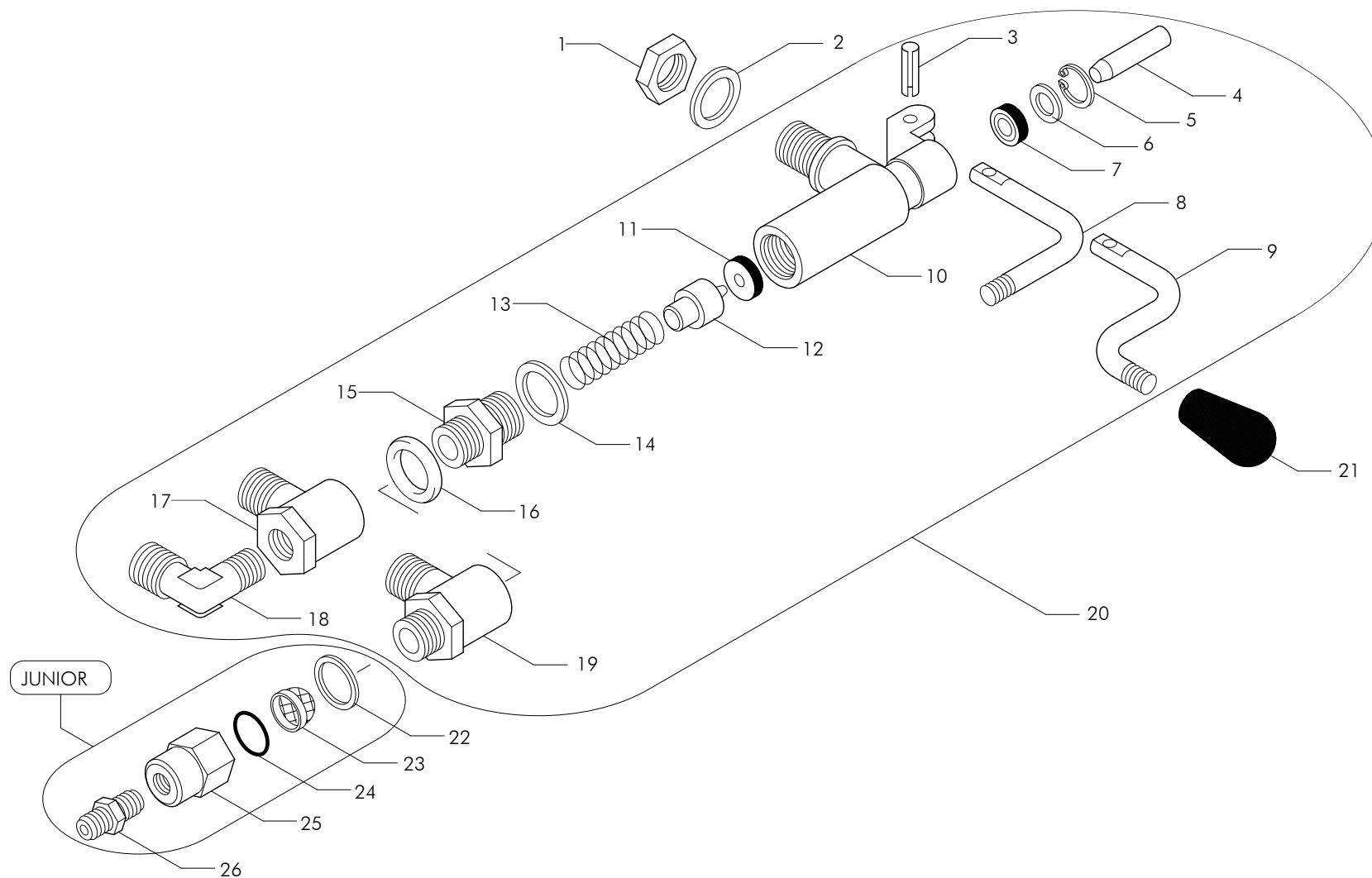
Carico Acqua - Manual Water Refile - Chargement Eau - Wasser-einfullung

WCH-WE1

rev.00

Carico acqua - Manual water refile - Chargement eau - Wasser-Einfullung

***CARICO ACQUA - MANUAL WATER REFILE
CHARGEMENT EAU - WASSER-EINFÜLLUNG***



Pos	Cod.	Denominazione - IT -	Denomination - GB -	Denomination - FR -	Denomination - DE -
1	WY25356	CONTRODADO OTTONE 3/8	BRASS LOCK NUT 3/8	CONTRE-ECROU LAITON 3/8	MESSING-GEGENMUTTER 3/8
2	WY25651	RONDELLA OTTONE 3/8	BRASS WASHER 3/8	RONDELLE LAITON 3/8	MESSINGSCHEIBE 3/8
3	WY10701	SPINA ELASTICA BRUNITA 5X20	BURNISHED ROLL PIN 5X20	FICHE ELASTIQUE BRUNIE 5X20	BRÜNIERTER ELASTISCHER STECKER 5X20
4	WY25315	ASTINA X POMPA H2O 8X35.6	WATER PUMP SPINDLE 8X35.6	TIGE POMPE EAU 8X35.6	STANGE FÜR WASSERPUMPE 8X35.6
5	WY10002	ANELLO DI ARRESTO INOX J 16 DIN472	STAINLESS CIRCLIP J 16	CIRCLIP INOX J 16	STAHLHALTERING J 16 DIN472
6	WY25653	RONDELLA X ASTINA D.EST. 15.4	SPINDLE WASHER 15.4	RONDELLE POUR TIGE 15.4	SCHEIBE F. STANGE 15.4
7	WY12205	GUARNIZIONE GOMMA GACO DE 056	GACO RUBBER GASKET DE 056	JOINT EN CAOUTCHOUC GACO DE 056	GACO GUMMIDICHTUNG DE 056
8	WY25201	LEVA POMPA FINITA CURVA 8X110	BENT MANUAL FILL LEVER 8X110	LEVIER POMPE EMBOUT COUDE 8X110	KRUMMER PUMPENHEBEL 8X110
9	WY25202	LEVA POMPA ENTRATA H2O AD "S"FINITA	PUMP LEVER WATER REFILL	LEVIER POMPE REMPLISSAGE EAU	PUMPENHEBEL WASSERFULLUNG
10	WY53004	CORPO POMPA	PUMP BODY	CORPS POMPE	PUMPENKORPER
11	WY12203	GUARNIZIONE GOMMA 15X4X4	RUBBER GASKET 15X4X4	JOINT EN CAOUTCHOUC 15X4X4	GUMMIDICHTUNG 15X4X4
12	WY25615	PISTONCINO POMPA H2O	WATER PUMP JUMPER	PISTON POMPE EAU	KOLBEN FÜR WASSERPUMPE
13	WY10451	MOLLA PIST POMPA VALVOLA SC N2 (C)	PUMP-VALVE S.C.PISTON SPRING N2 (C)	RESSORT PISTON POMPE-VALVE S.C.N2 C	PUMPENVENTIL S.C.KOLBENFEDER N2 (C)
14	WY12150	GUARNIZIONE CU POMPA / VALV.ESP.	PUMP COPPER GASKET 25X18.2X2	JOINT CU DE POMPE 25X18.2X2	PUMPENDICHTUNG 25X18.2X2
15	WY25680	RACCORDO POMPA 3/8XM18X1.5	PUMP CONNECTOR 3/8 X M18 X 1.5	RACCORD POMPE 3/8 X M18 X 1.5	PUMPENANSCHLUSS 3/8XM18X1.5
16	WY12101	GUARNIZIONE CU/ALIM 3/8 22X17X3	3/8 22X17X3 FEEDER/COPPER SEAL	JOINT CUIVRE/ALIM 3/8 22X17X3	KUPFERDICHTUNG/SPEIS. 3/8 22X17X3
17	WY43030001	RACCORDO INIETTORE ITALIA 3/8F	3/8FX3/8MX14F INJECTOR FITTING	RACC. INJECTEUR 3/8FX3/8MX14F	ANSCHLUSS EINSPRITZER 3/8FX3/8MX14F
18	WY23202	RACCORDO GOM.D8.2 3/8X1/4 CON	ELBOW BRASS CONNECTOR D8.2 3/8X1/4	RACCORD COUDE LAITON D8.2 3/8X1/4	MESSING-ANSCHLUSS D8.2 3/8X1/4
19	WY43020	DISTANZIALE POMPA	PUMP SPACER	ENTRETOISE POMPE	PUMPENENTFERNUNGSSTÜCK
20	WY61013	ASS.POMPA H2O ER/AL+AEA WE98 (S.P.)	WATER PUMP ASSEMBLY ER/AL+AEA WE98	ENSEMBLE POMPE A EAU ER/AL+AEA WE98	SET WASSERPUMPE ER/AL+AEA WE98
20	WY61015	ASS.POMPA H2O ER+AEA SPH (-POMELLO)	WATER PUMP ASSEMBLY ER+AEA SPH (-KNOB)	ENS. POMPE A EAU ER+AEA SPH (-BOUTON)	SET WASSERPUMPE ER+AEA SPH (-KNAUF)
21	WY15400	POMELLO LEVETTA POMPA I.147/40-M8	MANUAL FILL LEVER KNOB I.147/40-M8	BOUTON LEVIER POMPE I.147/40-M8	KNAUF PUMPENHEBEL I.147/40-M8
22	WY12154	GUARNIZIONE CU 3/8 22X17X1.5	3/8 22X17X1.5 COPPER SEAL	JOINT CUIVRE 3/8 22X17X1.5	KUPFERDICHTUNG 3/8 22X17X1.5
23	WY10254	FILTRO ACCIAIO 160-200 MESH	STEEL FILTER 160-200 MESH	FILTRE EN ACIER 160-200 MESH	STAHLFILTER 160-200 MESH
24	WY12312	GUARNIZIONE OR FILTRO AEA 10X2	O RING FOR WATER REFILL FILTER 10X2	JOINT OR FILTRE AUT.REM.EAU 10X2	OR DICHTUNG FÜR WASSERFULLUNGFILTER
25	WY25744	RIDUZIONE 1/8FX3/8F V.N.R.	REDUCTION 1/8FX3/8F	REDUCTION 1/8FX3/8F	REDUKTION 1/8FX3/8F
26	WY23210	RACCORDO DIRITTO D4 1/8X1/8 CON L.5	STRAIGHT FITTING D4 1/8X1/8 CONICAL	RACC. DROIT D4 1/8X1/8 CONIQUE L.5 11006	GERADER ANSCHLUSS D4 1/8X1/8 MIT L.5 110