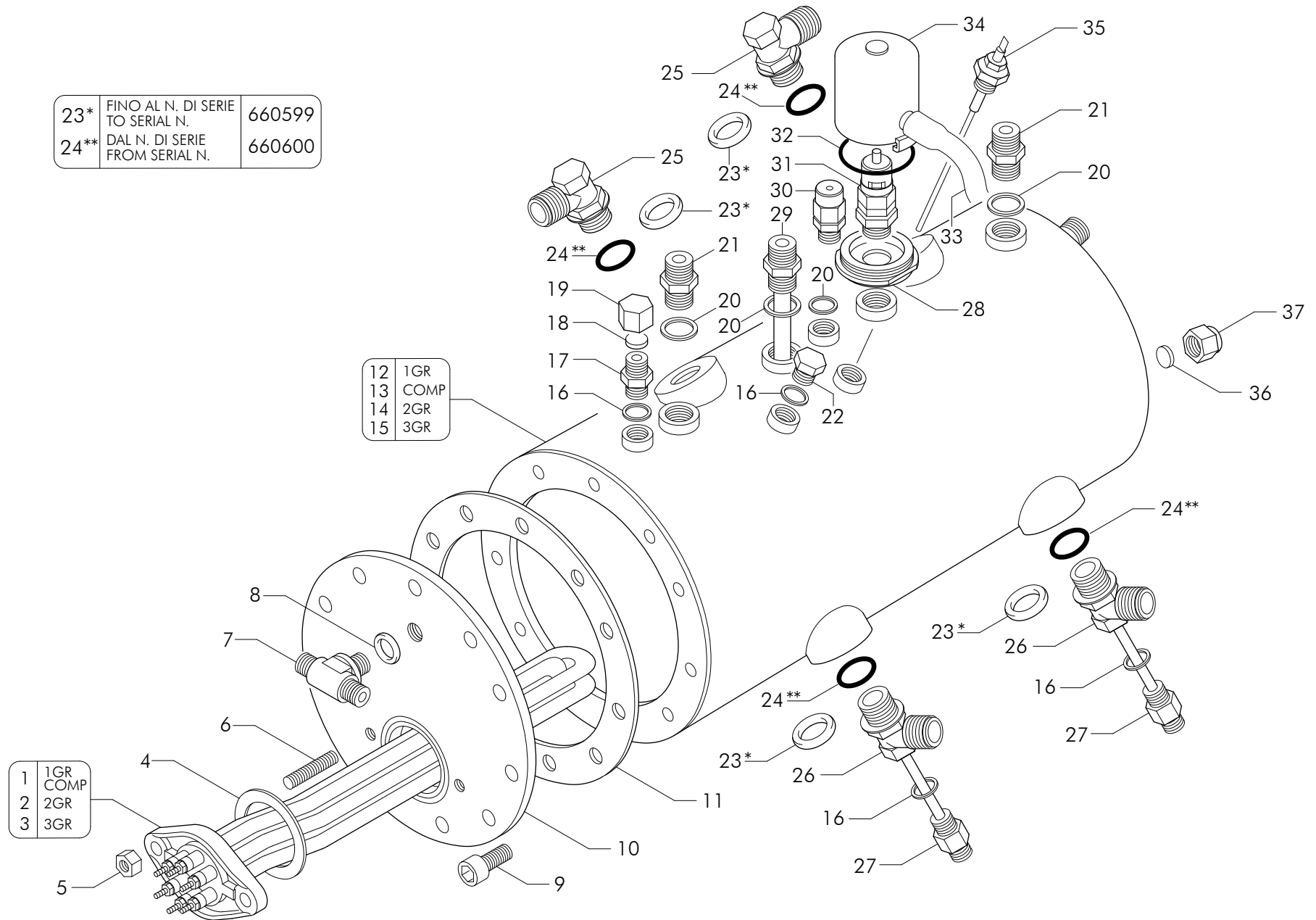


|      |                                     |        |
|------|-------------------------------------|--------|
| 23*  | FINO AL N. DI SERIE<br>TO SERIAL N. | 660599 |
| 24** | DAL N. DI SERIE<br>FROM SERIAL N.   | 660600 |



| Pos | Cod.         | Denominazione - IT -                  | Denomination - EN -                   | Denomination - FR -                   | Denomination - DE -                 |
|-----|--------------|---------------------------------------|---------------------------------------|---------------------------------------|-------------------------------------|
| 1   | WY4617001    | RESISTENZA 1GR 4P 120V 2000W          | HEATING ELEMENT 1GR 110V-2000W        | RESISTANCE 1GR 110V2000W              | HEIZKORPER 1 GR 110V 2000W          |
| 1   | WY4617012    | RESISTENZA 1GR 6P 230/240V 2700/2940W | HEATING ELEM. 1GR 230/240V 2700/2940W | RESISTANCE 1GR 230/240V 2700/2940W    | HEIZKORPER 1GR 230/240V 2700/2940W  |
| 2   | WY4617050    | RESISTENZA 2GR 4P 120V 2600W          | HEATING ELEM. 2GR 4P 120V 2600W       | RESISTANCE 2GR 4P 120V 2600W          | HEIZKORPER 2GR 4P 120V 2600W        |
| 2   | WY4617059    | RESISTENZA 2GR 6P 230/240V 3400/3700W | HEATING ELEM. 2GR 220/240V 3400/3700W | RESISTANCE 2GR 220/240V 3400/3700W    | HEIZKORPER 2GR 220/240V 3400/3700W  |
| 3   | WY4617107    | RESISTENZA 3GR 6P 230/240V 5000/5440W | HEATING ELEM. 3GR 220/240V 5000/5440  | RESISTANCE 3GR 220/240V 5000/5440W    | HEIZKORPER 3GR 220/240V 5000/5440W  |
| 4   | WY12001      | GUARNIZIONE TEFLON 58x43x2            | TEFLON GASKET 58x43x2                 | JOINT TEFLON 58x43x2                  | TEFLON DICHTUNG 58x23x2             |
| 5   | WY23049      | DADO OTTONE M8                        | BRASS NUT M8                          | ECROU LAITON M8                       | MESSING-SCHRAUBENMUTTER M8          |
| 6   | WY23133      | PRIGIONIERO INOX 8x40                 | STAINLESS STEEL BOLT 8x40             | VIS INOX 8x40                         | STAHLSCHRAUBE 8x40 8x40             |
| 7   | WY4643060    | RACCORDO -T- 1/4x1/4x1/4 CW510L       | 'T' CONNECTOR 1/4x1/4x1/4 CW510L      | RACCORD 'T' 1/4x1/4x1/4 CW510L        | T'-ANSCHLUSS 1/4X1/4X1/4 CW510L     |
| 8   | WY12100      | GUARNIZIONE CU/ALIM 1/4 18.7x13.2x2.5 | CU GASKET 1/4 18.7X13.2X2.5           | JOINT CU 1/4 18.7X13.2X2.5            | CU DICHTUNG 1/4 18.7x13.2x2.5       |
| 9   | WY23556      | VITE TCEI INOX 10x20                  | STEEL SCREW TCCE 10X20                | VIS INOX TCCE 10X20                   | STAHLSCHRAUBE TCCE 10x20            |
| 10  | WY4653011    | FLANGIA                               | FLANGE                                | BRIDE                                 | FLANSCH                             |
| 11  | WY12003      | GUARNIZIONE CALDAIA                   | BOILER GASKET                         | JOINT CHAUDIERE                       | KESSELDICHTUNG                      |
| 12  | WY4662050001 | CALDAIA 1GR CW510L                    | BOILER 1GR                            | CHAUDIERE 1GR                         | KESSEL 1GR                          |
| 13  | WY4662099003 | CALDAIA 2GR 7 LITRI SC.PASS.D-60      | 2GR 7-LITRE BOILER                    | CHAUDIERE 2GR 7 LITRES                | KESSEL 2 EINHEITEN 7 LITER          |
| 14  | WY4662204001 | CALDAIA 2GR                           | BOILER 2GR                            | CHAUDIERE 2GR                         | KESSEL 2GR                          |
| 15  | WY4662281001 | CALDAIA 3GR CW510L                    | BOLIER 3GR                            | CHAUDIERE 3GR                         | KESSEL 3GR                          |
| 16  | WY12153      | GUARNIZIONE RAME 1/4 17x13.3x1.5      | GASKET 1/4 17x13.3x1.5 COPPER         | JOINT CUIVRE 1/4 17x13.3x1.5          | KUPFERDICHTUNG 1/4 17x13.3x1.5      |
| 17  | WY4925686    | RACCORDO 1/4Mx1/4M                    | CONNECTOR 1/4Mx1/4M                   | RACCORD 1/4Mx1/4M                     | ANSCHLUSS 1/4Mx1/4M                 |
| 18  | WY12007      | GUARNIZIONE KLINGERSIL4400            | KLINGERSIL4400 SEAL                   | JOINT KLINGERSIL4400                  | DICHTUNG KLINGER SIL4400            |
| 19  | WY25782      | TAPPO FEMMINA 1/4 GAS                 | 1/4 GAS FEMALE TAP                    | BOUCHON FEMELLE 1/4 GAZ               | INNENANSCHLUSSSTOPSEL 1/4 GAS       |
| 20  | WY12154      | GUARNIZIONE CU 3/8 22x17x1.5          | GASKET COPPER 3/8 22x17x1,5           | JOINT CUIVRE 3/8 22x17x1.5            | KUPFERDICHTUNG 3/8 22x17x1.5        |
| 21  | WY4925687    | RACCORDO 3/8x3/8                      | 3/8x3/8 FITTING                       | RACCORD 3/8x3/8                       | ANSCHLUSS 3/8x3/8                   |
| 22  | WY4925780    | TAPPO MASCHIO OTTONE 1/4              | BRASS MALE CAP 1/4                    | BOUCHON MALE LAITON 1/4               | MESSING-STOPFEN 1/4                 |
| 23  | WY12105      | GUARNIZIONE CU/ALIM 1/2 GAS           | CU GASKET 1/2 GAS                     | JOINT CU 1/2 GAZ                      | CU DICHTUNG 1/2 GAS                 |
| 24  | WY12024      | GUARNIZIONE OR VITON                  | VITON O RING GASKET                   | JOINT OR                              | OR DICHTUNG                         |
| 25  | WY4923214001 | RACCORDO ORIENTABILE -L- 1/2          | ROTARY COUPLING                       | RACCORD ROTATIF                       | ROTARY KUPPLUNG                     |
| 26  | WY4923215001 | RACCORDO ORIENTABILE -T- 1/2          | ROTARY COUPLING                       | RACCORD ROTATIF                       | ROTARY KUPPLUNG                     |
| 27  | WY4852002788 | TUBO D-6 L.85                         | TUBE D6 L85                           | TUYAU D-6 L.85                        | ROHR D-6 L.85                       |
| 28  | WY15006001   | FLANGIA VALVOLA SICUREZZA             | FLANGE VALVE                          | JOINT VANNE                           | FLANSCH VENTIL                      |
| 29  | WY4652001612 | TUBO D-10 L.115                       | TUBE D-10 L.115                       | TUYAU D-10 L.115                      | ROHR D-10 L.115                     |
| 30  | WY4656150    | VALVOLA ANTIRISUCCHIO V.A.R. CW510L   | ANTI-EDDY VALVE V.A.R. CW510L         | SOUPAPE ANTI-DEPRESSION V.A.R. CW510L | VENTIL UNTERDRUCKFREI V.A.R. CW510L |
| 31  | WY4620352001 | VALVOLA SICUREZZA                     | SAFETY VALVE                          | VANNE DE SECURITE                     | SICHERHEITSVENTIL                   |
| 32  | WY12300000   | GUARNIZIONE OR                        | GASKET O RING                         | JOINT OR                              | OR DICHTUNG                         |
| 33  | WY15478002   | TUBO SILICONE 8x11 L.70cm             | SILICONE TUBE 8x11 L.70cm             | TUYAU SILICONE 8x11 L.70cm            | SILIKONROHR 8x11 L.70cm             |
| 34  | WY56009980   | ASSIEME PROTEZIONE VALVOLE SICUREZZA  | UNIT PROTECTION VALVE                 | ENSEMBLE PROTECTION VANNE             | SATZ-SCHUTZGITTER VENTIL            |
| 35  | WY4820251    | SONDA LIVELLO L.125                   | LEVEL PROBE L.125                     | JAUG L.125                            | PEGELFUHLER L.125                   |
| 36  | WY12402      | GUARNIZIONE PASTICCA 15x3             | GASKET 15x3                           | JOINT 15x3                            | DICHTUNG 15x3                       |
| 37  | WY25781      | TAPPO FEMMINA 3/8                     | FEMALE CAP 3/8                        | BOUCHON FEMELLE 3/8                   | STOPFEN 3/8                         |